

# Promoting Health and Wellbeing Across the Lifespan

2023 National Policy Agenda



Milken Institute School  
of Public Health  
THE GEORGE WASHINGTON UNIVERSITY

Sumner M. Redstone  
Global Center for  
Prevention & Wellness

# What We Do

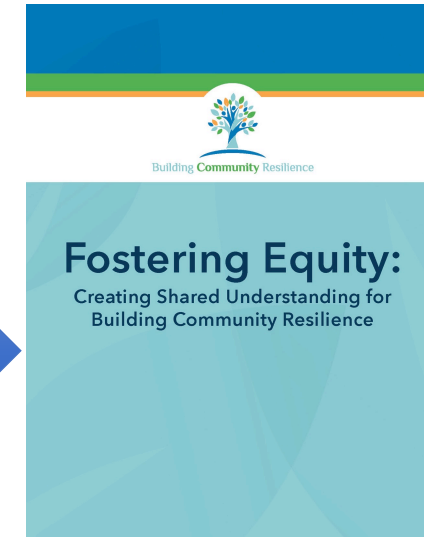
[go.gwu.edu/CCR](http://go.gwu.edu/CCR)

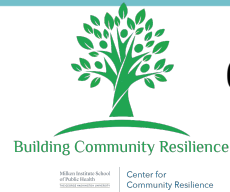


@ResilNation



[go.gwu.edu/BCRvideos](http://go.gwu.edu/BCRvideos)





**6 Regional Networks**



**11 Local Health Departments**

**Washington State**



**Oregon**



**Deschutes, OR**

**Alameda County, CA**



**Mesa County, CO**



**Lee County, IA**



**Kansas City & St. Louis, MO**



**Shelby County, TN**



**Dallas County, TX**



**Cincinnati, OH & Louisville, KY**



**Cleveland, OH**



**Jersey City, NJ**



**DC & Baltimore, MD**



**Appalachian District, NC**



**Leon County, FL**



Child  
Health



Maternal  
Health



Education



Childcare

WORKPLACE  
POLICY

Foster  
Care

Health  
Care



Child  
Nutrition

Reproductive  
Justice

# Building Blocks of Community Resilience

## 2023 Policy Agenda



# Introduction of Speakers



Wendy Ellis, DrPH  
*Director, Center for  
Community Resilience*



Julia Strasser, DrPH, MPH  
*Director, Jacobs Institute of  
Women's Health*



# **Next Policy Webinar**

## **Monday April 3, 2023**

### **1 pm (EST)**

**Improving Community Health:  
Trauma-Informed Schools  
&  
Black Maternal Health**



Milken Institute School  
of Public Health  
THE GEORGE WASHINGTON UNIVERSITY

Sumner M. Redstone  
Global Center for  
Prevention & Wellness

# Tools and Resources

- Promoting Health and Wellbeing Across the Lifespan One-Pager
  - <https://ccr.publichealth.gwu.edu/sites/g/files/zaxdzs4361/files/2023-01/2023-ccr-policy-agenda-1.19.23.pdf>
- Building Community Resilience Approach
  - <https://ccr.publichealth.gwu.edu/tools-resources/the-BCR-approach>
- Coalition Building & Communications Guide
  - <https://ccr.publichealth.gwu.edu/sites/g/files/zaxdzs4361/files/2022-12/ccr-communications-coalition-building-guide-2.0-dec.-2022.pdf>
- Policy & Advocacy Guide
  - <http://go.gwu.edu/bcrpolicyguide>